



Tapping Force Encodes Metrical Aspects of Rhythm

Alessandro Benedetto^{1*} and Gabriel Baud-Bovy^{2,3}

¹ Department of Translational Research, University of Pisa, Pisa, Italy, ² Robotics, Brain and Cognitive Science Unit, Italian Institute of Technology, Genoa, Italy, ³ Faculty of Psychology, Vita-Salute San Raffaele University, Milan, Italy

Humans possess the ability to extract highly organized perceptual structures from sequences of temporal stimuli. For instance, we can organize specific rhythmical patterns into hierarchical, or metrical, systems. Despite the evidence of a fundamental influence of the motor system in achieving this skill, few studies have attempted to investigate the organization of our motor representation of rhythm. To this aim, we studied—in musicians and non-musicians—the ability to perceive and reproduce different rhythms. In a first experiment participants performed a temporal order-judgment task, for rhythmical sequences presented via auditory or tactile modality. In a second experiment, they were asked to reproduce the same rhythmic sequences, while their tapping force and timing were recorded. We demonstrate that tapping force encodes the metrical aspect of the rhythm, and the strength of the coding correlates with the individual's perceptual accuracy. We suggest that the similarity between perception and tapping-force organization indicates a common representation of rhythm, shared between the perceptual and motor systems.

OPEN ACCESS

Edited by:

Daniela De Bartolo,
Sapienza University of Rome, Italy

Reviewed by:

Manuel Varlet,
Western Sydney University, Australia
Daniel J. Cameron,
McMaster University, Canada

*Correspondence:

Alessandro Benedetto
alessandro.benedetto@med.unipi.it

Specialty section:

This article was submitted to
Motor Neuroscience,
a section of the journal
Frontiers in Human Neuroscience

Received: 26 November 2020

Accepted: 26 March 2021

Published: 22 April 2021

Citation:

Benedetto A and Baud-Bovy G
(2021) Tapping Force Encodes
Metrical Aspects of Rhythm.
Front. Hum. Neurosci. 15:633956.
doi: 10.3389/fnhum.2021.633956

Keywords: beat perception, metrical coding, rhythm perception and production, music perception, action and perception, force

INTRODUCTION

When listening to music, people often perceive a certain regularity in the auditory temporal pattern, emerging from the presence of perceptual accents at specific intervals known as “beats.” Our ability to extract rhythmic patterns from temporal events crucially depends on several factors, including the temporal context (Lenc et al., 2020) and cultural environment (Jacoby and McDermott, 2017; London et al., 2017; van der Weij et al., 2017), and this has been widely explored over the years (Grondin, 2010; McAuley, 2010). One of the most influential ideas in time perception research is that humans possess an internal clock mechanism by which we measure and represent time (Treisman, 1963; Treisman et al., 1990). It has been proposed that this clock can synchronize with external events (e.g., sounds) and generates perceptual accents according to a specific set of rules (Povel and Okkerman, 1981; Essens and Povel, 1985). Based on these perceptual rules we can generate *simple rhythms* (i.e., sequences with equally spaced perceptual accents); alternatively, we can generate *complex rhythms* (i.e., sequences with unequally spaced perceptual accents (London, 1995)). The ability to extract a temporal meter from rhythms relies on musical training and on musical exposure to those rhythms (Cameron et al., 2015; London et al., 2017; van der Weij et al., 2017; Bouwer et al., 2018; Nave-Blodgett et al., 2021). This means that certain rhythms may induce, or favor (particularly in participants not previously exposed to those rhythms), perceptual strategies

based on non-metrical rules, such as chunking and serial grouping rules (non-metrical coding) (Grahn and Brett, 2007; Grube and Griffiths, 2009; Bouwer et al., 2018).

Hierarchical (metrical) percepts show a vertical organization, with inequalities between the elements of the structure; conversely, non-hierarchical (non-metrical) percepts possess a horizontal organization, with perceptual equalities between the members of the structure. Interestingly, metrical encoding of rhythm is generally accompanied by better performance in both discrimination/perceptual and reproduction/motor tasks than non-metrical encoding (Semjen and Vos, 2002; Patel et al., 2005; Phillips-Silver and Trainor, 2005; Grube and Griffiths, 2009), suggesting that meter perception is a sensorimotor phenomenon (Todd and Lee, 2015). Indeed, moving with the beat improves time perception (Manning and Schutz, 2013), metrical encoding of rhythm can be biased by movements (Phillips-Silver and Trainor, 2005, 2008), and specific activations from the motor system (including basal ganglia, premotor cortex, and supplementary motor area) have been reported during perception of metrical rhythms (Zatorre et al., 2007; Chen et al., 2008a,b; Bengtsson et al., 2009; Grahn and Rowe, 2009; Patel and Iversen, 2014). Furthermore, several studies involving transcranial magnetic stimulation (TMS) demonstrated that motor cortex excitability is directly influenced by the groove of the music. For instance, high-groove music (i.e., music easily inducing a metric encoding) modulates corticospinal excitability (Stupacher et al., 2013), and TMS pulses delivered synchronously with the beat for metrically strong sequences generates greater motor-evoked potential responses than for metrically weak sequences (Cameron et al., 2012). In addition, it has been suggested that musicians might possess an effective and automatic internal motor simulation related to beat perception (Su and Poppel, 2012), directly modulating primary motor cortex excitability (Stupacher et al., 2013).

Crucially, beat perception is known to generate a spontaneous synchronization between the perceptual pulses and our movements (Drake et al., 2000; Grahn and Brett, 2007; Repp and Su, 2013; Burger et al., 2014), and different metrical levels are embodied within the whole body (Burger et al., 2014, 2018), suggesting the presence of a common hierarchical organization of the sensory and the motor system during metrical encoding of rhythmic sequences. This sensorimotor link is consistent with the hypothesis of a common encoding strategy shared between the motor and the perceptual systems, or a shared sensorimotor representation of time (Morillon et al., 2014; Morillon and Baillet, 2017; Benedetto et al., 2020). However, this view is challenged by the evidence of a strong auditory vs. visual advantage in sensorimotor synchronization and beat perception (Bartlett and Bartlett, 1959; Patel et al., 2005; Grahn, 2012b), leading to the hypothesis of a special auditory-motor specialization. Tactile modality is certainly the best candidate to compare with auditory: not only do both auditory and tactile information consist of vibrations, but there are profound and early interferences between the two systems (Von Bekesy, 1959; Caetano and Jousmaki, 2006). Nevertheless, only a few studies have investigated rhythm perception and sensorimotor synchronization in the tactile modality, reporting the emergence

of beat perception also for this modality (Brochard et al., 2008; Ammirante et al., 2016; Gilmore et al., 2018). However, the hypothesis of an enhanced auditory-motor coupling for rhythmic processing cannot be dismissed (Ammirante et al., 2016).

Grahn (2009) previously investigated finger-tap velocity (an indirect measure of tapping force) during the reproduction of simple rhythms, auditorily presented. The author found that mean velocity was higher on taps presented on the beat than on other taps (Grahn, 2009), suggesting that participants spontaneously organize their motor output according to the metric structure of the percept. However, the internal hierarchy of a metrical sequence might reveal additional levels, and the extent to which force organization mimics this highly structured perceptual hierarchy is currently unknown.

We aimed, here, to provide a clearer picture of the tapping-force organization during rhythm reproduction. First, we assessed the individual perceptual abilities in estimating the temporal order judgments of rhythms varying in complexity in a group of musicians and non-musicians. Secondly, we investigated the fine internal motor representation of the rhythmic sequences (tapping force) during the reproduction of these sequences. To test for the generalizability of the results, rhythms were presented through auditory or tactile modality. The rationale was to investigate if metrical organization of forces (if any) could be driven only by auditory stimulation (as hypothesized by the auditory-motor enhancement hypothesis), or if it generalizes for a different modality.

To summarize the results, we found that the perceptual organization of the rhythm fits the force profile of the finger-taps during its reproduction, irrespective of the modality of stimulation: (i) we confirmed the presence of a generalized difference in force for taps presented on the beat vs. other taps; (ii) we found that this difference was not modality specific, being present also following a tactile stimulation; (iii) we found that the tapping force profile showed a difference between the metrical elements falling on the strong vs. medium elements of the sequence, indicating the presence of a fine-graded and hierarchical motor representation of the rhythm; (iv) finally, we show that the amount of *metricality* in the tapping-force, correlates with the perceptual precision, corroborating the idea of a shared and a-modal sensorimotor representation of rhythm.

MATERIALS AND METHODS

Participants

17 volunteers (including one author; age mean \pm standard deviation: 23.3 ± 1.6 , three women) participated in the study (15 right-handed). We selected participants on the basis of their years of institutional western musical training (music high school and/or conservatory of music in Italy), resulting in eight musicians (age: 22.5 ± 2.2 ; with at least 5 years of musical training: 7 ± 2 ; one woman) and nine non-musicians (age 23.9 ± 0.8 ; no institutional musical training; two women). Musicians played piano (1), bass (1), percussion (2), clarinet (2), trumpet (1), bassoon (1). All the participants performed the temporal-order task (experiment 1), 15 of those were additionally

tested for the reproduction task (including one author; eight musicians, seven non-musicians; experiment 2). The studies were reviewed and approved by the local ethics committee (Comitato Etico per la Sperimentazione con l'Essere Umano della ASL 3 di Genova).

Experimental Setup

The experimental setup was composed of headphones, a tactile stimulator, and a flat piezo-transducer to record finger taps. All devices were connected to a DAQ card (NI DAQ USB-6211) which was controlled through custom C# software run on a PC. The tension of the DAQ analogical output ports controlling the audio or tactile stimuli was updated at a high sampling rate (20 kHz). Note that the output vector that defined the stimulus was computed and loaded in memory using the DAQ dedicated driver and API beforehand so that the timing would be exact. In the reproduction task, one analog input port of the DAQ was used to record the tension produced by the flat piezo-transducer that was fixed on the top of a box. Piezoelectric sensors have the characteristic of transforming mechanical energy into electrical energy and are sensitive to the mechanical force applied. For this reason, the piezo-sensor recorded both the timing of the tap and the force applied by the participants for their finger-tapping. The output tension of the piezo was adjusted by mounting a resistor (22 k Ω) in parallel and sampled at 1000 Hz. The synchronization between output and input signals was ensured by using DAQ hardware synchronization mechanisms. The tactile stimulator was based on a speaker from which the cone had been removed. A light custom-designed 3D printed plastic pin was fixed on the voice coil. To deliver the tactile stimulation, the pin moved vertically through a small hole on the top of the box containing the speaker, where the participants rested their finger. The position of the pin was controlled by setting the tension of the DAQ analogical output port (± 10 V), which was amplified through a custom-designed current amplifier. The ability of the device to change position quickly and to apply a constant force on the fingertip was checked with a 6 DOF force sensor (Nano 17, ATI) placed just above the tip of the pin.

Stimuli and Procedures

The present study comprised two experiments. In experiment 1, participants performed a temporal-order judgment task; in experiment 2 they completed a non-isochronous continuous finger-tapping (reproduction task). The stimuli consisted of six sequences; half of the stimuli were simple sequences and the other half complex sequences. Simple rhythms were defined as sequences with equally spaced perceptual accents in time (e.g., a perceptual accent every 400 ms), and complex rhythms as sequences with unequally spaced perceptual accents in time (e.g., the delay between accents varied between 400 and 600 ms) (Povel and Okkerman, 1981; Essens and Povel, 1985). Each stimulus was composed of five elements, that could have either a single (1) or double (2) unit duration (determining the *speed* of the sequence), and the same intensity. The unit duration varied between 200, 223, 246, and 269 ms. The three simple sequences were: 21122, 22112, 22211 (*simple rhythm*). The three complex sequences were: 11122, 21112, 22111 (*complex rhythm*). The

intervals between each element of the sequence were obtained by shortening each element by 50 ms. Within each session, the duration of the unit varied randomly across trials to avoid learning effects and keep participants attentive to each rhythm. The auditory and tactile rhythmic sequences were presented block-wise. The auditory rhythmic elements were pure tone of 440 Hz (output tension amplitude: ± 0.05 V). The tactile sequences consisted of stimulation of the index fingertip of the non-dominant hand by a custom tactile stimulator. For both conditions, an auditory white noise (0.03 V) was superimposed onto the signal during the whole trial duration to assure acoustic isolation from the tactile stimulator and from the finger tapping.

Experiment 1: Temporal-Order Task

Each trial started with a rhythmic sequence (auditory or tactile) presented in a continuous loop for a total of three times. Participants were asked to imagine two following repetitions and to decide whether the beginning of the last repetition preceded or followed a probe (200 ms of duration) that occurred around the time of its ideal onset (**Figure 1B**). The probe preceded or followed the ideal onset of the last repetition by a 5, 10, 20, or 40% of the global duration of the sequence. After each trial, participants verbally reported whether the probe preceded or followed the ideal onset of the sequence. The probe consisted of an 800 Hz pure tone for the auditory condition and a tactile stimulation for the tactile condition. Each modality (auditory or tactile) and rhythm complexity (simple or complex) was tested in separate blocks. Each sequence was combined with the four possible speeds (determined by the unit duration), and all the possible time lags, which yielded 96 trials per condition. The order of presentation of the rhythmic sequences and tempi within each condition was randomized. The experiment lasted approximately 80 min and was divided in two separate sessions.

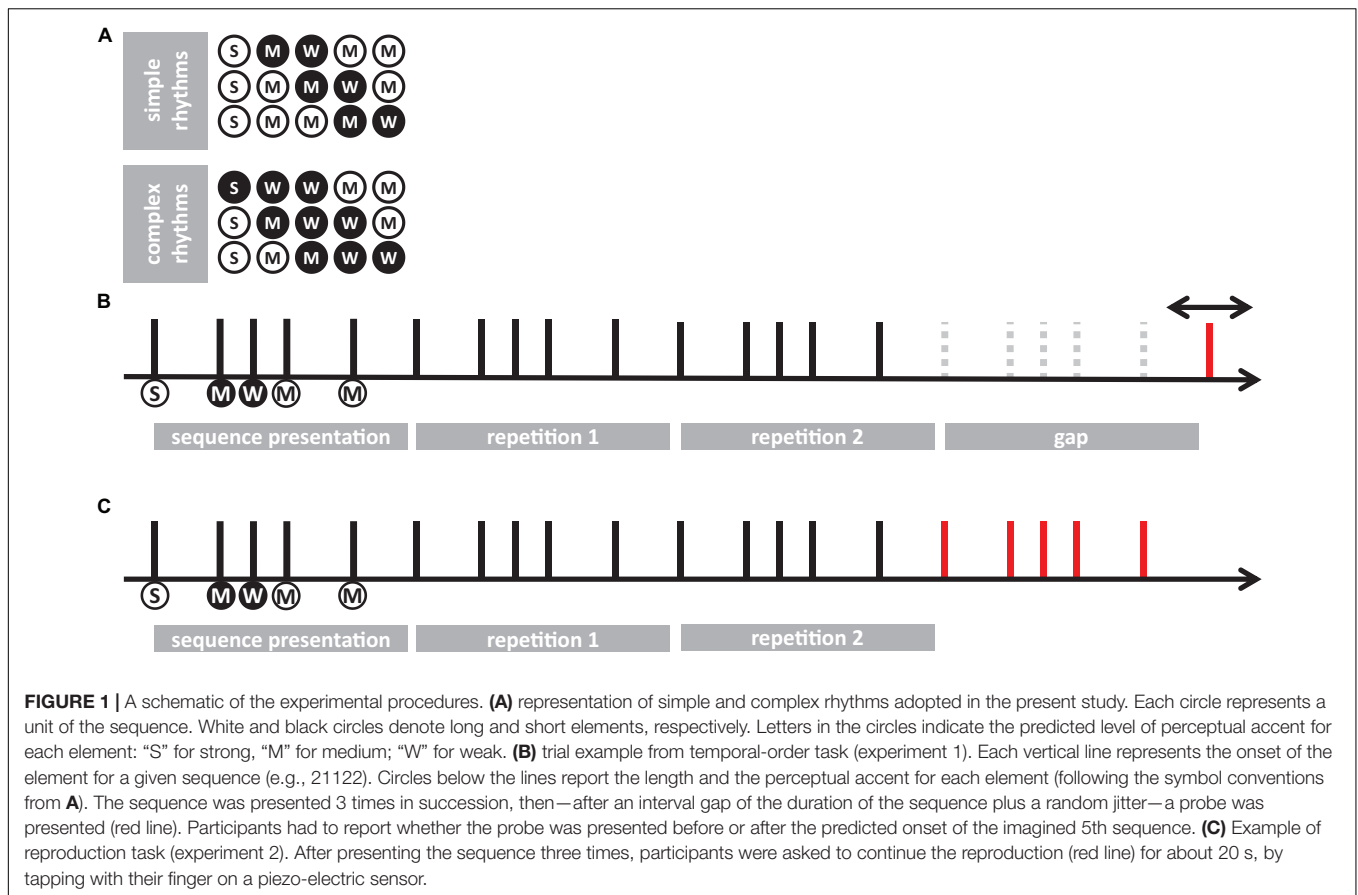
Experiment 2: Reproduction Task

Experiment 2 used the same stimuli as in experiment 1. A sequence was presented in a continuous loop for a total of three times. Participants were instructed to start the reproduction of the perceived rhythm after the end of the last repetition, and to reproduce the sequence until the end of the trial, which lasted 25 s (**Figure 1C**). The end of the trial was signaled by the stop of the white noise delivered via headphones. Participants were asked to tap with the index fingertip of their dominant hand on a piezoelectric transducer. Each modality (auditory or tactile) and rhythm complexity (simple or complex) was tested in separate blocks. Each stimulus was presented once for each speed (unit duration), which yielded 12 trials per condition. All four conditions were acquired during a unique recording session.

Data Analysis

Experiment 1: Temporal-Order Task

A cumulative gaussian function was fitted to the participants' responses as a function of the probe delay expressed as a percentage of the rhythm duration. For each participant, sensory modality (auditory or tactile) and rhythm complexity (simple or complex), we estimated the point-of-subjective-simultaneity (PSS) and the just-notable-difference (JND). PSS



measures a possible temporal shift of the perceived rhythm onset while JND measures the temporal variability of the perceived onset. Mixed-design repeated measure ANOVA on PSS and JND was run to estimate the main effects and the interaction of a full model (2 rhythm complexities \times 2 modalities \times 2 expertise, with rhythm complexity and modality as within factors, and expertise as between-subject effect). To satisfy the conditions of the ANOVA and power analysis (homoscedasticity and homogeneity of variance between groups), PSS and JND were transformed with a cubic-root transformation. For all statistically significant effects, we reported the generalized eta-squared η_G^2 with expertise as a measured variable (Olejnik and Algina, 2003).

For all analyses, we conducted a power analysis that combined elements of *a priori* and *post hoc* analysis. For all tests, the unstandardized effect size was determined on *a priori* ground, as the smallest effect that we considered to be meaningful or interesting. The variance-covariance structure was determined from the results of the experiments. In particular, we retained that a difference of 5% for the PSS and the JND was a meaningful difference for all effects and used the results of the experiments to estimate all relevant sources of variance. Given the sample sizes of this study, the probability of detecting a 5% temporal shift difference between the two groups was 51% for the PSS and 44% for the JND analysis. However, the power of detecting such a 5% difference was above 86% for all other effects in the PSS analysis,

including interactions with the between-subject group factor, and above 99% for all effects in the JND analysis.

To deal with the unbalance between the two groups, all power analyses were conducted in R with simulations (Arnold et al., 2011). First, we used linear mixed-effect models to identify the variance-covariance structure for each variable (Bates et al., 2015; Matuschek et al., 2017). In general, the identified variance-covariance structure included a random intercept for the subject and, in several cases, an uncorrelated random slope for one within-subject factor. More complex variance-covariance structures were not supported by the data. Note that the linear mixed-effect model (LME) included the same fixed effects as the corresponding mixed-effect repeated-measure ANOVA and that the *p*-values of both analyses were very similar in all cases. Second, we used the LME model with the variance-covariance structure identified in the previous step to simulate datasets. The fixed effects of these LME models were defined so that all main effects and interactions would include a meaningful difference (see above). Finally, we estimated the power by analyzing each simulated dataset with a mixed-effect repeated-measure ANOVA as described above and by tallying the number of times each effect was statistically significant. In general, these analyses indicated that the sample size was sufficient to detect reliably a meaningful difference if it existed with the exception of the expertise main effect. This result reflects the fact that the power for the main effect corresponding to a between-subject factor

in a split-plot design is markedly lower than the power of the within-subject factors and/or all their interactions (including the interactions between between-subject and within-subject factors) (Bradley and Russell, 1998). Note that this approach is different from standard *post hoc* power analysis where the effect size is determined by the actual results. Provided that the power is large enough, it ensures that a meaningful effect would be statistically significant. Accordingly, it also ensures that a non-statistically significant test is not due to lack of power but to an effect size that is of little interest. Still, the results of the simulations should be interpreted cautiously as it is not possible to exclude the possibility that the simulated datasets underestimate or misrepresent the variance in the actual populations given the limited sample size of the study.

In addition to frequentist statistics, we also implemented a Bayesian analysis for the repeated measure ANOVA (JASP version 0.9.1.0), and for *t*-tests. Bayesian analysis of effects in the ANOVA were computed across matched models. We report the change from prior to posterior inclusion odds ($BF_{inclusion}$). The JZS Bayes Factor (BF_{10}) was estimated for paired *t*-tests with a default scale factor of 0.707 (Liang et al., 2008; Rouder et al., 2009).

Experiment 2: Reproduction Task

Reproduction Quality

Given the circular nature of the tapping behavior, the tapping performance was assessed using circular measures (Della Bella et al., 2017). For each trial, we defined an expected sequence to be reproduced (i.e., the presented sequence), that we compared with the observed one. Each recorded tap was categorized as long (double duration) or short (single duration), according to the expected order of long and short elements. Within each category, we discarded outliers, defined as taps farther away than 2 standard deviations from the average observed delay (about 4% of total taps). We transformed each tap-delay into a phase (φ_k), according to its expected delay with the formula:

$$\varphi_k = 2\pi \frac{x_k}{\hat{x}_k} \quad (1)$$

where x_k is the observed, and \hat{x}_k is the expected delay for the tap k . We computed the vector length (R , synchronization precision) and the angle (Ψ , synchronization accuracy) of the resulting distribution as:

$$R = \frac{\left| \sum_{k=1}^N e^{i\varphi_k} \right|}{N} \quad (2)$$

and

$$\Psi = \arg \left(\sum_{k=1}^N e^{i\varphi_k} \right) \quad (3)$$

In order to compensate for possible missing taps, the procedure was run for each possible expected sequence obtainable from the original one (e.g., from the sequence “22112”: “22112,” “21122,” “11222,” “12221,” “22211”). Thus, for each trial we ended up with five couples of measures (two for each tested sequence). The measures referring to the sequence with the

higher synchronization precision were kept for further analysis. Trials with a poor synchronization precision (below 0.5) were discarded from further analysis (about 5% of trials). The procedure resulted in two indexes of reproduction quality: (i) synchronization precision (R), and (ii) synchronization accuracy (Ψ). Synchronization precision measured the participants' precision in reproducing the sequence, and its values were bounded between 0 (minimal precision) to 1 (maximal precision). To meet the ANOVA assumptions about the normal distribution of residuals, the synchronization precision was Fisher-transformed (z) using the inverse hyperbolic tangent of the vector length (R), as:

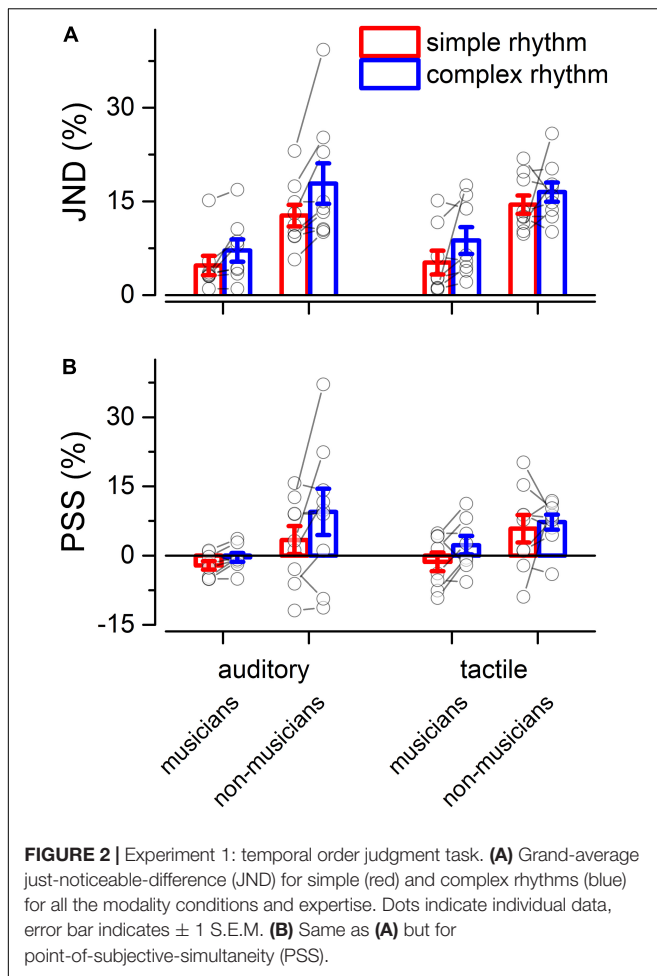
$$R_z = \frac{1}{2} \ln \left(\frac{1+R}{1-R} \right) \quad (4)$$

Synchronization accuracy measured the participants' accuracy in reproducing the sequence, with values reported in radians and bounded between $-\pi$ and π , where values closer to 0 indicate maximal accuracy and closer to π indicate minimal accuracy. For the two indexes, we evaluated the effects of rhythm complexity, expertise and modality by a mixed-design repeated measure ANOVA (2 rhythm complexities \times 2 modalities \times 2 expertise, with rhythm complexity and modality as within factors, and expertise as between-subjects effect). Power was computed similarly as in experiment 1, with the smallest meaningful effect size set as 0.1 for synchronization precision, and 0.15° for synchronization accuracy. The probability of detecting a meaningful difference between the two groups was only 9% for synchronization precision and 23% for the synchronization accuracy analysis. For the synchronization precision analysis, power was also low for rhythm complexity (21%) and the interaction between group and rhythm complexity (22%). The power of detecting a meaningful difference in synchronization precision or accuracy was above 87 and 77%, respectively, for all other effects and interactions.

Reproduction Force

For each element of each sequence, we predicted—according to metrical encoding rules (Povel and Okkerman, 1981; Essens and Povel, 1985)—the strength of its perceptual accent (corresponding to the hierarchical level of the element in the sequence). This prediction led to a categorization of each element as strong (S), medium (M), and weak (W) (see **Figure 1A**). Strong elements (S) were defined as those elements falling on the perceptual beat and starting the sequence (i.e., the elements with the higher hierarchical position). Medium elements (M) were defined as elements falling on a perceptual beat but not in a starting position. Finally, weak elements (W) were defined as those elements that did not fall on a perceptual beat.

The reproduction force of each tap was estimated by computing the maximal voltage generated around the time of each tap by the piezo-sensor (within -10 to 50 ms from tap onset). In order to directly compare forces across trials and conditions, they were standardized (*z*-scored) within each trial, and a repeated measure ANOVA was run to investigate the main effects of modality, rhythm complexity and element (2 modalities \times 2 rhythm complexities \times 3 elements). The test



of Mauchly revealed a violation of sphericity for the factor “element” (Mauchly’s $W = 0.514$; $p = 0.018$). Consequently, a Greenhouse-Geisser sphericity correction was applied to the degrees of freedom of the ANOVA. Power was computed similarly as in experiment 1, with the smallest meaningful effect size set as 0.1. Power was above 94% for all the effects and interactions, except for the element main effect (19%).

We defined an index of metrical coding resulting in the difference between the mean force generated to reproduce the strong and the medium elements of each sequence (*metrical coding index*). This comparison allowed us to investigate further the hierarchical organization of the forces, i.e. the dissimilarities between elements presented on the perceptual beat (note that weak elements were not presented on the perceptual beat).

RESULTS

Experiment 1: Temporal-Order Task

Separated repeated measure ANOVA analyses were conducted on the transformed JND and PSS to investigate the main effect of rhythm complexity (simple vs. complex), expertise (non-musicians vs. musicians), and modality (auditory vs. tactile).

As shown in **Figure 2A**, the analysis on JND revealed an effect of expertise [$F(1, 15) = 17.97$, $p < 0.001$, $\eta_G^2 = 0.43$; $BF10_{inclusion} = 39.41$] and rhythm complexity [$F(1, 15) = 17.31$, $p < 0.001$, $\eta_G^2 = 0.05$; $BF10_{inclusion} = 227.56$]. No other effects or interactions were statistically significant ($p > 0.05$, see **Table 1**). The PSS revealed a statistically significant effect of expertise [$F(1, 15) = 5.51$, $p = 0.033$, $\eta_G^2 = 0.17$; $BF10_{inclusion} = 2.32$] and rhythm complexity [$F(1, 15) = 7.30$, $p = 0.01$, $\eta_G^2 = 0.034$; $BF10_{inclusion} = 2.38$; see **Figure 2B**]. No other main effects or interactions were statistically significant ($p > 0.05$, see **Table 2**). Overall, these results indicate a higher perceptual precision and accuracy for musicians compared to non-musicians, as well as a general perceptual advantage in temporal order judgments for simple sequences compared to complex sequences, independent of the modality of stimulation.

Experiment 2: Reproduction Task

Reproduction Quality

We evaluated two indexes of reproduction quality: *i*) synchronization precision, and *ii*) synchronization accuracy (see section “Materials and Methods” for details). Repeated measure ANOVA on synchronization precision revealed a significant effect of expertise [$F(1, 13) = 6.99$, $p = 0.02$, $\eta_G^2 = 0.23$; $BF10_{inclusion} = 3.28$], modality [$F(1, 13) = 6.20$, $p = 0.027$, $\eta_G^2 = 0.009$; $BF10_{inclusion} = 0.64$] and rhythm complexity [$F(1, 13) = 13.15$, $p = 0.003$, $\eta_G^2 = 0.13$; $BF10_{inclusion} = 9532.69$], and no significant interactions ($p > 0.05$, see **Table 3** and **Figure 3A**). The same analysis performed on the synchronization accuracy revealed a main effect of rhythm complexity [$F(1, 13) = 5.50$, $p = 0.036$, $\eta_G^2 = 0.054$; $BF10_{inclusion} = 8.97$], and no other

TABLE 1 | Repeated measure ANOVA—JND (experiment 1).

Effect	Df num.	DF den.	MSE	<i>F</i>	η_G^2	<i>P</i> -value
Expertise	1	15	0.488	17.975	0.469	<0.001
Modality	1	15	0.055	0.818	0.005	0.380
Expertise:modality	1	15	0.055	0.006	<0.001	0.938
Complexity	1	15	0.062	17.312	0.098	<0.001
Expertise:complexity	1	15	0.062	1.354	0.008	0.263
Modality:complexity	1	15	0.057	0.005	<0.001	0.943
Expertise:modality:complexity	1	15	0.057	1.680	0.009	0.214

Transformation: $x^{1/3}$. Bold highlights the statistically significant results ($p < 0.05$).

TABLE 2 | Repeated measure ANOVA—PSS (experiment 1).

Effect	Df num.	DF den.	MSE	<i>F</i>	η_G^2	<i>P</i> -value
Expertise	1	15	1.78	5.51	0.175	0.033
Modality	1	15	0.75	1.22	0.016	0.286
Expertise:modality	1	15	0.75	0.06	<0.001	0.804
Complexity	1	15	0.27	7.30	0.034	0.016
Expertise:complexity	1	15	0.27	0.01	<0.001	0.911
Modality:complexity	1	15	0.27	0.00	<0.001	0.976
Expertise:modality:complexity	1	15	0.27	0.30	0.001	0.590

Transformation: $\text{sign}(x)(|x| + 1)^{1/3} - 1$. Bold highlights the statistically significant results ($p < 0.05$).

significant effects or interactions ($p > 0.05$) (see **Table 4** and **Figure 3B**). Overall, the results confirm that complex sequences were generally reproduced with less precision and accuracy than simple sequences.

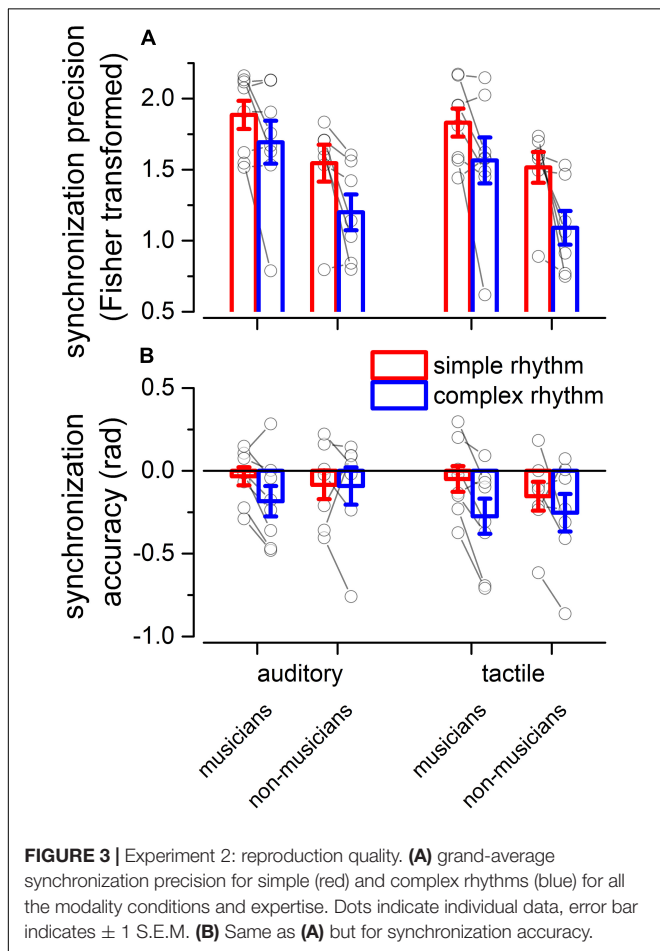
Reproduction Force

With the goal of investigating the internal motor organization of rhythm, we focused on the force aspects of the reproduction (see **Figure 4**). Repeated measure ANOVA on the applied force revealed a main effect of the element [$F(1.25, 17.52) = 52.70$,

TABLE 3 | Repeated measure ANOVA—synchronization precision (experiment 2).

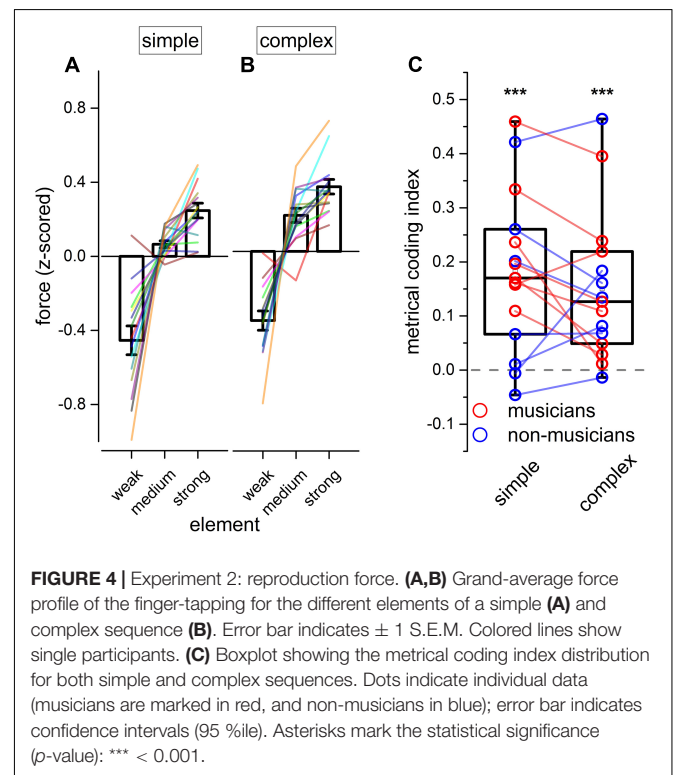
Effect	Df num.	DF den.	MSE	F	η_G^2	P-value
Expertise	1	13	0.35	6.99	0.281	0.020
Modality	1	13	0.01	6.20	0.015	0.027
Expertise:modality	1	13	0.01	0.11	0.000	0.740
Complexity	1	13	0.10	13.15	0.183	0.003
Expertise:complexity	1	13	0.10	0.84	0.014	0.374
Modality:complexity	1	13	0.01	2.19	0.003	0.162
Expertise:modality:complexity	1	13	0.01	0.00	0.000	0.958

Transformation: $\text{atanh}(x)$. Bold highlights the statistically significant results ($p < 0.05$).



$p < 0.001$, $\eta_G^2 = 0.70$; $BF_{inclusion} = 2.874e+43$], rhythm complexity [$F(1, 14) = 45.77$, $p < 0.001$, $\eta_G^2 = 0.06$; $BF_{inclusion} = 43.36$], and a significant triple interaction between modality, rhythm complexity and element [$F(1.46, 20.48) = 4.70$, $p = 0.029$, $\eta_G^2 = 0.02$; $BF_{inclusion} = 0.81$; see **Table 5**]. Importantly, Bayesian repeated measure ANOVA revealed that the best model was the one including only rhythm complexity and element ($BF_{model} = 47.78$). *Post hoc* comparisons revealed that weak elements were reproduced with less force than medium [$t(14) = -7.46$, $p_{holm} < 0.01$, Cohen's $d = -1.92$, $BF_{10} = 1.075e+13$] and strong elements [$t(14) = -9.83$, $p_{holm} < 0.001$, Cohen's $d = -2.54$, $BF_{10} = 1.135e+17$], and medium elements were reproduced with less force than strong elements [$t(14) = -2.37$, $p_{holm} = 0.025$, Cohen's $d = -0.61$, $BF_{10} = 2.588e+6$]. To summarize, results revealed that rhythm complexity and element modulated the force of the tap. Crucially, a force difference was evident not only between elements presented on the beat (strong and medium elements) vs. elements presented off the beat (weak elements), but also between strong and medium elements (i.e., both elements presented on the perceptual beat but differing in the hierarchy of the sequence; see **Figures 4A,B**). Although expertise was not included in the ANOVA for sake of simplification, the average force for each musician and non-musician are indicated in **Figure 4**.

To assure that the reported differences in force were not simply due to a physical constraint imposed by the duration of the current element to be reproduced, we replicated the analysis by focusing on strong and medium elements with double unit durations (i.e., the double elements presented on the



perceptual beat but differing in the hierarchy of the sequence. The sequence “11122” was discarded from this analysis because of the short duration of the strong element). Results revealed significant effects of rhythm complexity [$F(1, 14) = 25.59$, $p < 0.001$, $\eta_G^2 = 0.17$; $BF_{inclusion} = 8033.50$] and element [$F(1, 14) = 6.01$, $p = 0.028$, $\eta_G^2 = 0.1$; $BF_{inclusion} = 78.99$], indicating that participants used more force in reproducing the strong element of the sequence as compared to the medium one, and this effect cannot be attributed to the duration of the element that was reproduced.

The temporal gaps between taps might influence the applied force. In order to control for this possibility, we ran a repeated-measure ANOVA on the speed of the sequences (unit duration). If the level of force depends on the temporal gap between taps, we expect an effect of speed (e.g., lower force for faster rhythms, where the gaps are shorter than for slower rhythms). The ANOVA revealed no significant effects or interactions [speed: $F(3, 42) = 1.06$, $p = 0.374$, $\eta_G^2 = 0.07$; $BF_{inclusion} = 0.26$], suggesting that the reported effect was driven by the position of the element in the sequence and not by physical constraints.

To summarize the previous findings, we measured the force difference between the strong and the medium elements of each sequence (*metrical coding index*, see **Figure 4C**). Values above 0 would indicate that the strong element was reproduced with more force than the medium one. In other words, a value above 0 would indicate a coherence between the predicted metrical hierarchy of the element and the force applied in reproducing it and, hence, the presence of metrical coding in the force. Conversely, values around 0 would indicate that tapping force was not coding the metrical aspects of the rhythm. Two-tail paired t-tests were run for simple and complex sequences. Results demonstrated

that participants encoded metrical information in force for both simple and complex sequences [simple rhythm: $t(14) = 4.79$, $p_{holm} < 0.001$, $BF_{10} = 114.39$; complex rhythm: $t(14) = 4.29$, $p_{holm} < 0.001$, $BF_{10} = 50.32$].

It is known that metrical coding favors both rhythm perception and reproduction (Semjen and Vos, 2002; Phillips-Silver and Trainor, 2005; Grahn and Brett, 2007; Chen et al., 2008a; Grube and Griffiths, 2009; Cameron and Grahn, 2014). To investigate this aspect further, we correlated the perceptual performance from experiment 1 (for both JND and PSS) with the *metrical coding index*. To account for possible spurious correlations introduced by differences in experimental conditions and expertise, all the indexes to-be-correlated were mean-centered (*ipsitized*) for rhythm complexity and expertise (e.g., the distribution of the JNDs pertaining to musicians in complex rhythms was centered at 0). Results revealed that the PSS correlated with metrical coding abilities (Pearson's $r = -0.56$; $p = 0.001$), while JND did not (Pearson's $r = 0.002$; $p = 0.99$, see **Figures 5A,B**).

Finally, we found that JND (not shown), PSS, and metrical coding index within participants strongly correlated across rhythm complexities [JND: $F(1, 13) = 72.4$, $p < 0.001$, $r(15) = 0.92$; PSS: $F(1, 13) = 27.9$, $p < 0.001$, $r(15) = 0.82$; metrical coding index: $F(1, 13) = 17.1$, $p = 0.001$, $r(15) = 0.75$; see **Figures 5C,D**].

DISCUSSION

Volunteers (musicians and non-musicians) were asked to separately perform an auditory and a tactile temporal-order judgment task (experiment 1), where the experimenter manipulated the complexity of the rhythm. In a second experiment, volunteers were asked to reproduce the same rhythms, and the timing and force of their reproduction was analyzed (experiment 2).

Our results revealed that (i) rhythm complexity affects precision and accuracy for both perceptual and reproduction tasks; (ii) tapping force was higher for elements presented on the beat than for elements falling outside the beat (or on the weak beat); (iii) metrical elements falling on the strong vs. medium beat of the sequence were further differentiated, indicating the presence of a complex hierarchical motor organization; (iv) this force difference was not modality specific; (v) the sensorimotor organization of rhythms was the same for different modalities of rhythm presentation (auditory or tactile); and finally, (vi) the amount of *metricality* in the tapping-force correlates with the individual perceptual accuracy.

Overall, results from experiment 1 and 2 revealed the presence of a general effect of rhythm complexity on sensorimotor precision and accuracy: simple rhythms were perceived and reproduced with more accuracy and precision compared to complex rhythms. There is currently no consensus about the key factors making a rhythm “complex” or “simple” (Grahn, 2012a). We speculate that a main difference between the two types of rhythm might be linked to the number of clocks (or oscillators) needed to univocally predict the pulses generated by

TABLE 4 | Repeated measure ANOVA—synchronization accuracy (experiment 2).

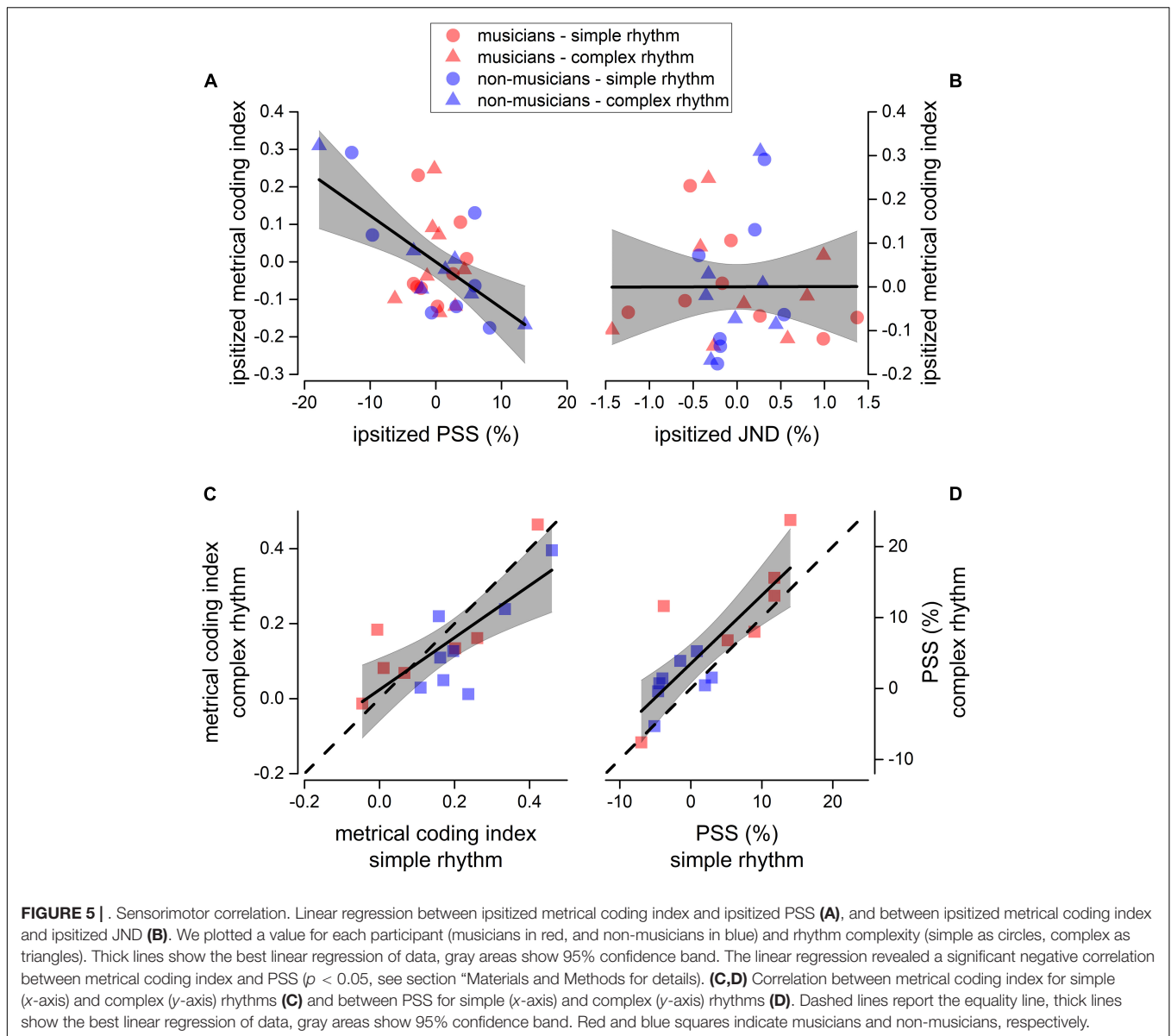
Effect	Df num.	DF den.	MSE	F	η_G^2	P-value
Expertise	1	13	0.19	0.00	0.000	0.928
Modality	1	13	0.02	4.34	0.028	0.057
Expertise:modality	1	13	0.02	0.58	0.003	0.457
Complexity	1	13	0.03	5.49	0.057	0.035
Expertise:complexity	1	13	0.03	1.70	0.018	0.213
Modality:complexity	1	13	0.01	2.32	0.007	0.151
Expertise:modality:complexity	1	13	0.01	0.02	0.000	0.873

Bold highlights the statistically significant results ($p < 0.05$).

TABLE 5 | Repeated measure ANOVA—force (experiment 2).

Effect	Df num.	DF den.	MSE	F	η_G^2	P-value
Modality	1	14	0.00	0.25	0.000	0.618
Complexity	1	14	0.01	45.77	0.067	<0.001
Element	1.25	17.52	0.24	52.70	0.707	<0.001
Modality:complexity	1	14	0.00	0.04	0.000	0.840
Modality:element	1.91	26.84	0.03	0.49	0.004	0.604
Complexity: element	1.19	16.74	0.04	0.11	0.000	0.779
Modality:complexity:element	1.46	20.48	0.02	4.70	0.022	0.029

Bold highlights the statistically significant results ($p < 0.05$).



the rhythm itself (i.e., the complexity of the predictive model). Subsequent pulses in simple rhythms are perceived at fixed and equal temporal intervals, and a single oscillator could easily model the perceptual distribution of pulses. On the other hand, complex rhythms generate un-equally spaced pulses, that cannot be modeled by a single oscillator, implicating the presence of multiple phase-locked oscillators working together to predict the timing of the perceptual pulses. In this sense, simple predictive models might be advantageous for perception and sensorimotor synchronization as they generally might require less attentional and mnemonic (and generally neuronal) resources, as compared to complex models of prediction.

Although the facilitatory effect of simple rhythms was clearly visible for both groups, we also found that musicians perceived and, to some extent, reproduced complex rhythms better than non-musicians. It is noteworthy that musicians received an

institutional western musical training in Italy, which includes the exposure to complex rhythms. For this reason, complex rhythms are considered metrical by most musicians. In contrast, the impact of the subjective experience in shaping rhythm perception is intrinsically more problematic for non-musicians (reporting no institutional music training) despite possible exposure to rhythms and music that might have included complex rhythms. In this respect, it should be noted that the perception of metrical structures in a rhythm strongly relies on subjective experiences and culture (Cameron et al., 2015; London et al., 2017; van der Weij et al., 2017; Bouwer et al., 2018; Nave-Blodgett et al., 2021) and could be shaped by passive exposure to music (Jacoby and McDermott, 2017). For instance, some of the complex rhythms adopted here are common in certain folk music from Balkan, east European, or in jazz music, but almost absent in other cultures (e.g., they are almost absent in the Italian folk music, the state

where participants were recruited and tested). Unfortunately, we could not investigate this aspect further, as non-musicians reported no institutional training in music, and we did not evaluate their degree of musical expertise with any other scale.

Grahn (2009) demonstrated that tap velocity (an indirect measure of tapping force) during the reproduction of simple rhythms was higher on taps presented on the beat than on other taps (Grahn, 2009). We replicated this effect showing that the weak elements of a sequence (i.e., those elements not falling on the beat, or falling on sub-division of it) are reproduced with less force than medium and strong elements. Importantly, we extended this result by showing that the strong and medium elements (i.e., elements falling on the beat, but pertaining to different hierarchical levels) were further reproduced with different intensities, indicating the presence of a complex hierarchical coding.

We found here the presence of a comparable hierarchical organization of forces for both simple and complex rhythms. Indeed, a close look at the metrical coding index, revealed that—across participants—it strongly correlated for the different rhythm complexities. This suggests that, irrespective of a general sensorimotor facilitation for simple vs. complex rhythms, participants were able to code both simple and complex sequences adopting a hierarchical organization. Importantly, the correlation between perceptual accuracy and metrical coding suggests the presence of a continuous gradient in which participants with a stronger metrical coding were also more accurate in the perceptual task. It would be interesting, for future research, to investigate the organization of forces on different rhythms (e.g., rhythms with different integer ratios, or purely non-metrical sequences) and directly comparing it for musicians, non-musicians, and cross-culturally.

Metrical coding has been mostly reported in auditory modality, suggesting that this ability might be specific to the auditory system (Bartlett and Bartlett, 1959; Patel et al., 2005; Grahn, 2012b). In line with this hypothesis, a close link between sensorimotor brain activity and auditory temporal predictions or musical imagery has been demonstrated (Morillon et al., 2014; Morillon and Baillet, 2017; Gelding et al., 2019). Motor cortex excitability and coordination is directly influenced by the groove of the auditory stimulation (Wilson and Davey, 2002; Stupacher et al., 2013); however, metrical coding has been recently shown in tactile perception (Brochard et al., 2008; Ammirante et al., 2016; Gilmore et al., 2018), questioning the existence of a special link between beat perception and auditory modality (Ammirante et al., 2016).

Current results revealed no effect of modality in the perceptual task (for both perceptual accuracy and precision) and in reproduction accuracy, but a significant (although weak) effect of modality for reproduction precision. Crucially, the analysis on forces revealed no effect of the modality of stimulation, indicating the presence of a similar hierarchical organization of forces under both stimulation conditions, and further questioning the hypothesis of specific auditory-motor processes for rhythm perception and reproduction.

How might this shared temporal rhythm be orchestrated in the brain? The synchrony between different perceptual systems

(or between perception and action) is challenged by the evidence that different processes elaborate the information at different speeds: for instance, time has been shown to vary across sensory modalities and features of the sensory stimulation (Johnston et al., 2006; Kanai et al., 2006; Burr et al., 2011; Harrington et al., 2011; Tomassini et al., 2011). It has been suggested that motor system might play a key role in shaping a unitary sense of time, possibly by synchronizing the dynamics of local processing (Hommel et al., 2001; Benedetto et al., 2018, 2020). This hypothesis is in line with the evidence that time perception and motor timing rely on similar cerebral structures (Schubotz et al., 2000; Nobre and O'Reilly, 2004).

Passive perception of metrical rhythms is known to elicit the activity of several motor areas (Zatorre et al., 2007; Chen et al., 2008a,b; Bengtsson et al., 2009; Grahn and Rowe, 2009; Patel and Iversen, 2014), and it has been suggested that it might involve an internal motor simulation, phase-locked with the pulse of the rhythm (Wilson and Davey, 2002; Su and Poppel, 2012). Manning and Schutz (H2013) demonstrated that timekeeping is improved when participants move along with a rhythm. In their study, participants heard a series of isochronous sounds followed by a short silence and a probe beat, and they were asked to judge whether the timing of the probe was consistent with the timing of the preceding sequence. The authors found an improvement in the perceptual performance when participants tapped along with the beat, remarking on the presence of a beneficial crosstalk between the sensory and the motor system (Manning and Schutz, 2013) and suggesting that perceptual contents and action plans are coded in a common representational medium (Hommel et al., 2001). In line with this hypothesis, our results demonstrated further that the organization of the rhythm is directly encoded in the force profile of the finger-taps, and this effect is independent of the modality of stimulation.

CONCLUSION

To sum up, our results show the presence of a hierarchical organization of the forces during finger-tapping to reproduce a rhythm, and this organization mimics the perceptual hierarchical organization of the rhythm itself. We speculate that this effect reflects the presence of a shared representation of rhythm between the motor and the sensory systems, i.e., a supra-modal representation of time shared within the sensorimotor circuit that facilitates both the perception and the reproduction of the temporal sequences.

DATA AVAILABILITY STATEMENT

Experimental data are downloadable at Zenodo repository: <https://doi.org/10.5281/zenodo.4637676>.

ETHICS STATEMENT

The study followed a protocol approved by the Local Ethics Committee, Comitato Etico per la Sperimentazione con l'Essere

Umano della ASL 3 di Genova, in accordance with institutional requirements and national legislation. A written informed consent was obtained for the participation.

AUTHOR CONTRIBUTIONS

AB and GB-B conceived, designed the experiment, performed the analysis, and wrote the manuscript. AB collected the data. Both authors contributed to the article and approved the submitted version.

REFERENCES

- Ammirante, P., Patel, A. D., and Russo, F. A. (2016). Synchronizing to auditory and tactile metronomes: a test of the auditory-motor enhancement hypothesis. *Psychon. Bull. Rev.* 23, 1882–1890. doi: 10.3758/s13423-016-1067-9
- Arnold, B. F., Hogan, D. R., Colford, J. M. Jr., and Hubbard, A. E. (2011). Simulation methods to estimate design power: an overview for applied research. *BMC Med. Res. Methodol.* 11:94. doi: 10.1186/1471-2288-11-94
- Bartlett, N. R., and Bartlett, S. C. (1959). Synchronization of a motor response with an anticipated sensory event. *Psychol. Rev.* 66, 203–218. doi: 10.1037/h0046490
- Bates, D., Kliegl, R., Vasishth, S., and Baayen, H. (2015). Parsimonious mixed models. *arXiv [Preprint]* arXiv:1506.04967
- Benedetto, A., Burr, D. C., and Morrone, M. C. (2018). Perceptual oscillation of audiovisual time simultaneity. *eNeuro 5*, ENEURO.0047-18.2018.
- Benedetto, A., Morrone, M. C., and Tomassini, A. (2020). The common rhythm of action and perception. *J. Cogn. Neurosci.* 32, 187–200. doi: 10.1162/jocn_a_01436
- Bengtsson, S. L., Ullen, F., Ehrsson, H. H., Hashimoto, T., Kito, T., Naito, E., et al. (2009). Listening to rhythms activates motor and premotor cortices. *Cortex* 45, 62–71. doi: 10.1016/j.cortex.2008.07.002
- Bouwer, F. L., Burgoyne, J. A., Odijk, D., Honing, H., and Grahn, J. A. (2018). What makes a rhythm complex? The influence of musical training and accent type on beat perception. *PLoS One* 13:e0190322. doi: 10.1371/journal.pone.0190322
- Bradley, D. R., and Russell, R. L. (1998). Some cautions regarding statistical power in split-plot designs. *Behav. Res. Methods Instrum. Comput.* 30, 462–477. doi: 10.3758/bf03200681
- Brochard, R., Touzalin, P., Despres, O., and Dufour, A. (2008). Evidence of beat perception via purely tactile stimulation. *Brain Res.* 1223, 59–64. doi: 10.1016/j.brainres.2008.05.050
- Burger, B., London, J., Thompson, M. R., and Toiviainen, P. (2018). Synchronization to metrical levels in music depends on low-frequency spectral components and tempo. *Psychol. Res.* 82, 1195–1211. doi: 10.1007/s00426-017-0894-2
- Burger, B., Thompson, M. R., Luck, G., Saarikallio, S. H., and Toiviainen, P. (2014). Hunting for the beat in the body: on period and phase locking in music-induced movement. *Front. Hum. Neurosci.* 8:903. doi: 10.3389/fnhum.2014.00903
- Burr, D. C., Cicchini, G. M., Arrighi, R., and Morrone, M. C. (2011). Spatiotopic selectivity of adaptation-based compression of event duration. *J. Vis.* 11, 21; author reply 21a.
- Caetano, G., and Jousmaki, V. (2006). Evidence of vibrotactile input to human auditory cortex. *Neuroimage* 29, 15–28. doi: 10.1016/j.neuroimage.2005.07.023
- Cameron, D. J., Bentley, J., and Grahn, J. A. (2015). Cross-cultural influences on rhythm processing: reproduction, discrimination, and beat tapping. *Front. Psychol.* 6:366. doi: 10.3389/fpsyg.2015.00366
- Cameron, D. J., and Grahn, J. A. (2014). Enhanced timing abilities in percussionists generalize to rhythms without a musical beat. *Front. Hum. Neurosci.* 8:1003. doi: 10.3389/fnhum.2014.01003
- Cameron, D. J., Stewart, L., Pearce, M. T., Grube, M., and Muggleton, N. G. (2012). Modulation of motor excitability by metricality of tone sequences. *Psychomusicology* 22, 122–128. doi: 10.1037/a0031229

FUNDING

This project was supported by the European Research Council (ERC) under the European Union's Horizon 2020 program (Grant Agreement Nos. 832813-GENPERCEPT and 801715-PUPILTRAITS) and by MIUR—PRIN 2017—grant No. 2017SBCPZY_02.

ACKNOWLEDGMENTS

We thank Eleanor Reynolds for proofreading the manuscript.

- Chen, J. L., Penhune, V. B., and Zatorre, R. J. (2008a). Listening to musical rhythms recruits motor regions of the brain. *Cereb. Cortex* 18, 2844–2854. doi: 10.1093/cercor/bhn042
- Chen, J. L., Penhune, V. B., and Zatorre, R. J. (2008b). Moving on time: brain network for auditory-motor synchronization is modulated by rhythm complexity and musical training. *J. Cogn. Neurosci.* 20, 226–239. doi: 10.1162/jocn.2008.20018
- Della Bella, S., Farrugia, N., Benoit, C. E., Biegel, V., Verga, L., Harding, E., et al. (2017). BAASTA: battery for the assessment of auditory sensorimotor and timing abilities. *Behav. Res. Methods* 49, 1128–1145. doi: 10.3758/s13428-016-0773-6
- Drake, C., Penel, A., and Bigand, E. (2000). Tapping in time with mechanically and expressively performed music. *Music Percept.* 18, 1–23. doi: 10.2307/40285899
- Essens, P. J., and Povel, D. J. (1985). Metrical and nonmetrical representations of temporal patterns. *Percept. Psychophys.* 37, 1–7. doi: 10.3758/bf03207132
- Gelding, R. W., Thompson, W. F., and Johnson, B. W. (2019). Musical imagery depends upon coordination of auditory and sensorimotor brain activity. *Sci. Rep. U. K.* 9:16823.
- Gilmore, S. A., Nespoli, G., and Russo, F. A. (2018). Neural correlates of beat perception in vibro-tactile modalities. *J. Acoust. Soc. Am.* 144, 1838–1838. doi: 10.1121/1.5068102
- Grahn, J. A. (2009). The role of the basal ganglia in beat perception: neuroimaging and neuropsychological investigations. *Ann. N. Y. Acad. Sci.* 1169, 35–45. doi: 10.1111/j.1749-6632.2009.04553.x
- Grahn, J. A. (2012a). Neural mechanisms of rhythm perception: current findings and future perspectives. *Top. Cogn. Sci.* 4, 585–606. doi: 10.1111/j.1756-8765.2012.01213.x
- Grahn, J. A. (2012b). See what I hear? Beat perception in auditory and visual rhythms. *Exp. Brain Res.* 220, 51–61. doi: 10.1007/s00221-012-3114-8
- Grahn, J. A., and Brett, M. (2007). Rhythm and beat perception in motor areas of the brain. *Journal of cognitive neuroscience* 19, 893–906. doi: 10.1162/jocn.2007.19.5.893
- Grahn, J. A., and Rowe, J. B. (2009). Feeling the beat: premotor and striatal interactions in musicians and nonmusicians during beat perception. *J. Neurosci.* 29, 7540–7548. doi: 10.1523/jneurosci.2018-08.2009
- Grondin, S. (2010). Timing and time perception: a review of recent behavioral and neuroscience findings and theoretical directions. *Atten. Percept. Psycho.* 72, 561–582. doi: 10.3758/app.72.3.561
- Grube, M., and Griffiths, T. D. (2009). Metricality-enhanced temporal encoding and the subjective perception of rhythmic sequences. *Cortex* 45, 72–79. doi: 10.1016/j.cortex.2008.01.006
- Harrington, D. L., Castillo, G. N., Fong, C. H., and Reed, J. D. (2011). Neural underpinnings of distortions in the experience of time across senses. *Front. Integr. Neurosci.* 5:32. doi: 10.3389/fnint.2011.00032
- Hommel, B., Musseler, J., Aschersleben, G., and Prinz, W. (2001). The theory of event coding (TEC): a framework for perception and action planning. *Behav. Brain Sci.* 24, 849–878; discussion 878–937.
- Jacoby, N., and McDermott, J. H. (2017). Integer ratio priors on musical rhythm revealed cross-culturally by iterated reproduction. *Curr. Biol.* 27, 359–370. doi: 10.1016/j.cub.2016.12.031
- Johnston, A., Arnold, D. H., and Nishida, S. (2006). Spatially localized distortions of event time. *Curr. Biol.* 16, 472–479. doi: 10.1016/j.cub.2006.01.032

- Kanai, R., Paffen, C. L. E., Hogendoorn, H., and Verstraten, F. A. J. (2006). Time dilation in dynamic visual display. *J. Vis.* 6, 1421–1430.
- Lenc, T., Keller, P. E., Varlet, M., and Nozaradan, S. (2020). Neural and behavioral evidence for frequency-selective context effects in rhythm processing in humans. *Cereb. Cortex Commun.* 1:tgaa037.
- Liang, F., Paulo, R., Molina, G., Clyde, M. A., and Berger, J. O. (2008). Mixtures of g priors for Bayesian variable selection. *J. Am. Stat. Assoc.* 103, 410–423.
- London, J. (1995). Some examples of complex meters and their implications for models of metric perception. *Music Percept.* 13, 59–77. doi: 10.2307/40285685
- London, J., Polak, R., and Jacoby, N. (2017). Rhythm histograms and musical meter: a corpus study of Malian percussion music. *Psychon. Bull. Rev.* 24, 474–480. doi: 10.3758/s13423-016-1093-7
- Manning, F., and Schutz, M. (2013). “Moving to the beat” improves timing perception. *Psychon. Bull. Rev.* 20, 1133–1139. doi: 10.3758/s13423-013-0439-7
- Matuschek, H., Kliegl, R., Vasishth, S., Baayen, H., and Bates, D. (2017). Balancing type I error and power in linear mixed models. *J. Mem. Lang.* 94, 305–315. doi: 10.1016/j.jml.2017.01.001
- McAuley, J. D. (2010). “Tempo and Rhythm”, in *Springer Handbook of Auditory Research: Music Perception*, Vol. 36, eds M. R. Jones, R. R. Fay and A. N. Popper (New York, NY: Springer), 165–199.
- Morillon, B., and Baillet, S. (2017). Motor origin of temporal predictions in auditory attention. *Proc. Natl. Acad. Sci. U.S.A.* 114, E8913–E8921.
- Morillon, B., Schroeder, C. E., and Wyart, V. (2014). Motor contributions to the temporal precision of auditory attention. *Nat. Commun.* 5:5255.
- Nave-Blodgett, J. E., Snyder, J. S., and Hannon, E. E. (2021). Hierarchical beat perception develops throughout childhood and adolescence and is enhanced in those with musical training. *J. Exp. Psychol. Gen.* 150, 314–339. doi: 10.1037/xge0000903
- Nobre, A. C., and O’Reilly, J. (2004). Time is of the essence. *Trends Cogn. Sci.* 8, 387–389.
- Olejnik, S., and Algina, J. (2003). Generalized eta and omega squared statistics: measures of effect size for some common research designs. *Psychol. Methods* 8, 434–447. doi: 10.1037/1082-989x.8.4.434
- Patel, A. D., and Iversen, J. R. (2014). The evolutionary neuroscience of musical beat perception: the action simulation for auditory prediction (ASAP) hypothesis. *Front. Syst. Neurosci.* 8:57. doi: 10.3389/fnsys.2014.00057
- Patel, A. D., Iversen, J. R., Chen, Y. Q., and Repp, B. H. (2005). The influence of metricality and modality on synchronization with a beat. *Exp. Brain Res.* 163, 226–238. doi: 10.1007/s00221-004-2159-8
- Phillips-Silver, J., and Trainor, L. J. (2005). Feeling the beat: movement influences infant rhythm perception. *Science* 308, 1430–1430. doi: 10.1126/science.1110922
- Phillips-Silver, J., and Trainor, L. J. (2008). Vestibular influence on auditory metrical interpretation. *Brain Cogn.* 67, 94–102. doi: 10.1016/j.bandc.2007.11.007
- Povel, D. J., and Okkerman, H. (1981). Accents in equitone sequences. *Percept. Psychophys.* 30, 565–572. doi: 10.3758/bf03202011
- Repp, B. H., and Su, Y. H. (2013). Sensorimotor synchronization: a review of recent research (2006–2012). *Psychon. B Rev.* 20, 403–452. doi: 10.3758/s13423-012-0371-2
- Rouder, J. N., Speckman, P. L., Sun, D. C., Morey, R. D., and Iverson, G. (2009). Bayesian t tests for accepting and rejecting the null hypothesis. *Psychon. B Rev.* 16, 225–237. doi: 10.3758/pbr.16.2.225
- Schubotz, R. I., Friederici, A. D., and von Cramon, D. Y. (2000). Time perception and motor timing: A common cortical and subcortical basis revealed by fMRI. *Neuroimage* 11, 1–12. doi: 10.1006/nimg.1999.0514
- Semjen, A., and Vos, P. G. (2002). The impact of metrical structure on performance stability in bimanual 1 : 3 tapping. *Psychol. Res. Psych. Fo* 66, 50–59. doi: 10.1007/s004260100073
- Stupacher, J., Hove, M. J., Novembre, G., Schütz-Bosbach, S., and Keller, P. E. (2013). Musical groove modulates motor cortex excitability: a TMS investigation. *Brain Cogn.* 82, 127–136. doi: 10.1016/j.bandc.2013.03.003
- Su, Y. H., and Poppel, E. (2012). Body movement enhances the extraction of temporal structures in auditory sequences. *Psychol. Res.* 76, 373–382. doi: 10.1007/s00426-011-0346-3
- Todd, N. P., and Lee, C. S. (2015). The sensory-motor theory of rhythm and beat induction 20 years on: a new synthesis and future perspectives. *Front. Hum. Neurosci.* 9:444. doi: 10.3389/fnhum.2015.00444
- Tomassini, A., Gori, M., Burr, D., Sandini, G., and Morrone, M. C. (2011). Perceived duration of visual and tactile stimuli depends on perceived speed. *Front. Integr. Neurosci.* 5:51.
- Treisman, M. (1963). Temporal discrimination and the indifference interval: Implications for a model of the “internal clock”. *Psychol. Monogr.* 77, 1–31. doi: 10.1037/h0093864
- Treisman, M., Faulkner, A., Naish, P. L. N., and Brogan, D. (1990). The internal clock - evidence for a temporal oscillator underlying time perception with some estimates of its characteristic frequency. *Perception* 19, 705–743. doi: 10.1068/p190705
- van der Weij, B., Pearce, M. T., and Honing, H. (2017). A probabilistic model of meter perception: simulating enculturation. *Front. Psychol.* 8:824. doi: 10.3389/fpsyg.2017.00824
- Von Békésy, G. (1959). Similarities between hearing and skin sensations. *Psychol. Rev.* 66, 1–22. doi: 10.1037/h0046967
- Wilson, E. M., and Davey, N. J. (2002). Musical beat influences corticospinal drive to ankle flexor and extensor muscles in man. *Int. J. Psychophysiol.* 44, 177–184. doi: 10.1016/s0167-8760(01)00203-3
- Zatorre, R. J., Chen, J. L., and Penhune, V. B. (2007). When the brain plays music: auditory-motor interactions in music perception and production. *Nat. Rev. Neurosci.* 8, 547–558. doi: 10.1038/nrn2152

Conflict of Interest: The authors declare that the research was conducted in the absence of any commercial or financial relationships that could be construed as a potential conflict of interest.

Copyright © 2021 Benedetto and Baud-Bovy. This is an open-access article distributed under the terms of the Creative Commons Attribution License (CC BY). The use, distribution or reproduction in other forums is permitted, provided the original author(s) and the copyright owner(s) are credited and that the original publication in this journal is cited, in accordance with accepted academic practice. No use, distribution or reproduction is permitted which does not comply with these terms.